



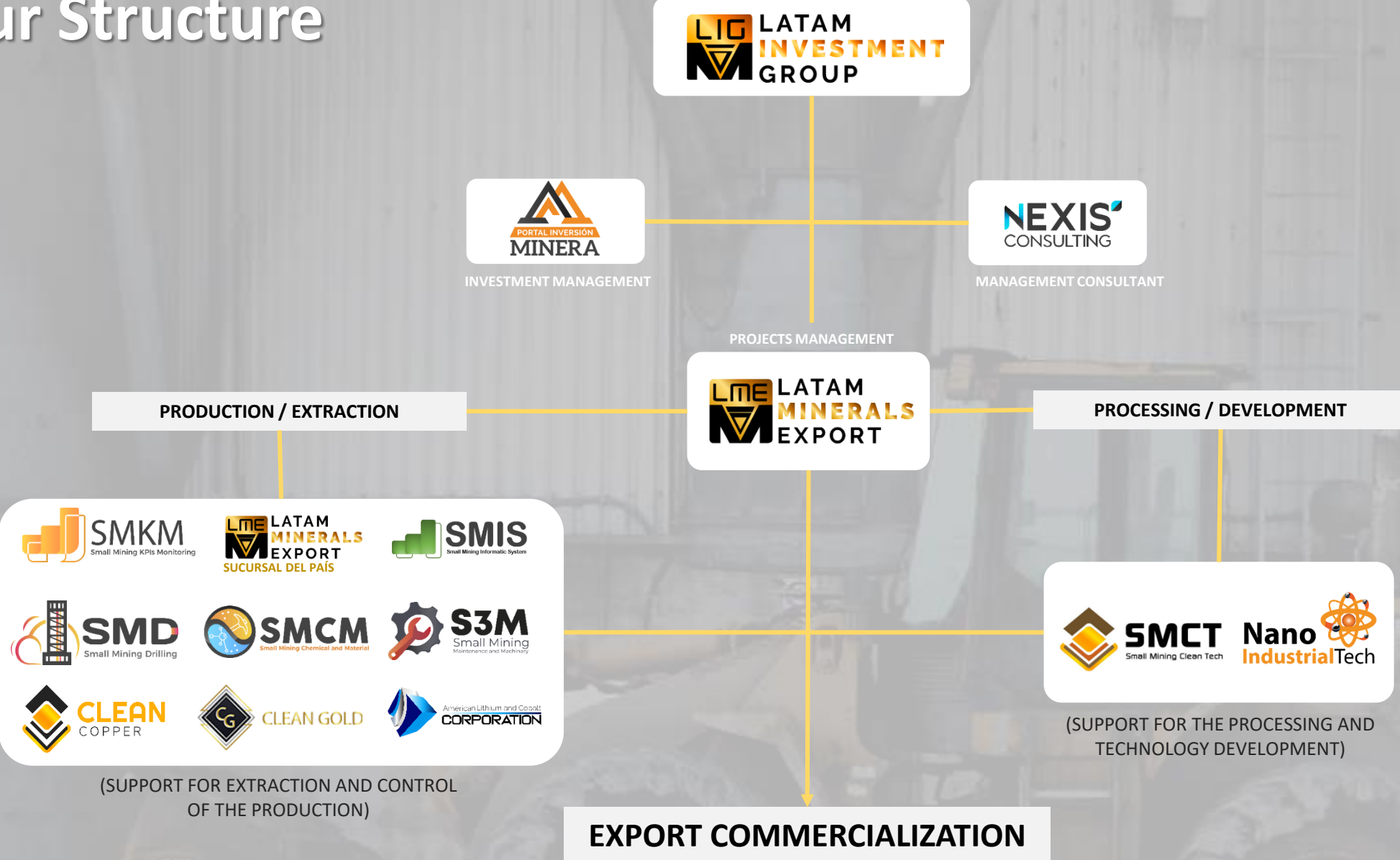
LIG LATAM
INVESTMENT
GROUP



Pioneers in 
Small GREAT Mining

OUR HOLDING

Our Structure



(SUPPORT FOR EXTRACTION AND CONTROL OF THE PRODUCTION)

(SUPPORT FOR THE PROCESSING AND TECHNOLOGY DEVELOPMENT)





LATAM INVESTMENT GROUP, is a holding of Latin American companies that participates in the extraction, processing and commercialization of small-scale mining projects with the extraction of metals and non-metals, either in association with small miners or with their own belongings. Our innovative financing system allows anyone to be an investor, promoting applied scientific developments, generating profitability, sustainability and development for the entire community in Latin America.

Our purpose is to achieve the dream of promoting this new Mining Philosophy, with a more profitable, innovative social perspective that guarantees safe extraction, with quick returns and with the same standards of Large Mining.

<https://lataminvestmentgroup.com/en/>



LATAM MINERAL EXPORT, It's the main company of **LATAM INVESTMENT GROUP**. It's the organization in charge of managing the exploration, extraction and refining of metals and minerals. Likewise, it is responsible for the commercialization of all the production of the projects developed in Latin America.

Its hallmark is good operating practices, care for the environment, support for the communities in which it operates and an unwavering commitment to safety.

<https://latammineralsexport.com>



PORTAL DE INVERSIÓN MINERA, is an investment platform that allows generating business opportunities in the mining field, through national and foreign investors, where they are able to Sell, Finance and Invest in various mining projects developed in Latin America, in addition to being able to have a future space for offers and tenders with controls and monitoring structure.

This system allows working with small and medium mining, placing special focus on small copper, cobalt, lithium, nitrate, iodine and gold mining, focused on owners of mining concessions that require financing or who only wish to sell their rights through owners. of mines in operation.

<https://portaldeinversionminera.com>



CLEAN GOLD, CLEAN GOLD, is a LATAM INVESTMENT GROUP Holding company, leader in the processing and refining of high purity GOLD, through environmentally clean technologies, and free of contaminants.

It bases its technology on a high-quality chemical process, which separates the metals contained in the molten material, generating a metal bar that is 99.99% free of contaminants, thus complying with all national and international environmental standards and regulations.

<https://cleangold.cl>



CLEAN COPPER, is a LATAM INVESTMENT GROUP Holding company, leader in the processing and refining of COPPER of the highest purity, through environmentally clean technologies, and free of contaminants.

It bases its technology on a high-quality chemical process, which separates the metals contained in the molten material, generating a 99.99% contaminant-free copper metal bar, thus complying with all national and international environmental standards and regulations.

<https://cleancopper.cl>



NANO INDUSTRIAL TECH, is the LIG Group company dedicated to the research, design, manufacture and characterization of Nano-Materials, for their application in various areas and products of the industrial world.

Our objectives are focused on increasing the value proposition of our clients with research, development, innovation, training and consulting processes, in the use and application of Nano-Materials, through the development of proprietary technology designed for industrial scaling, with a clear route to optimize the processes of our clients and associates.

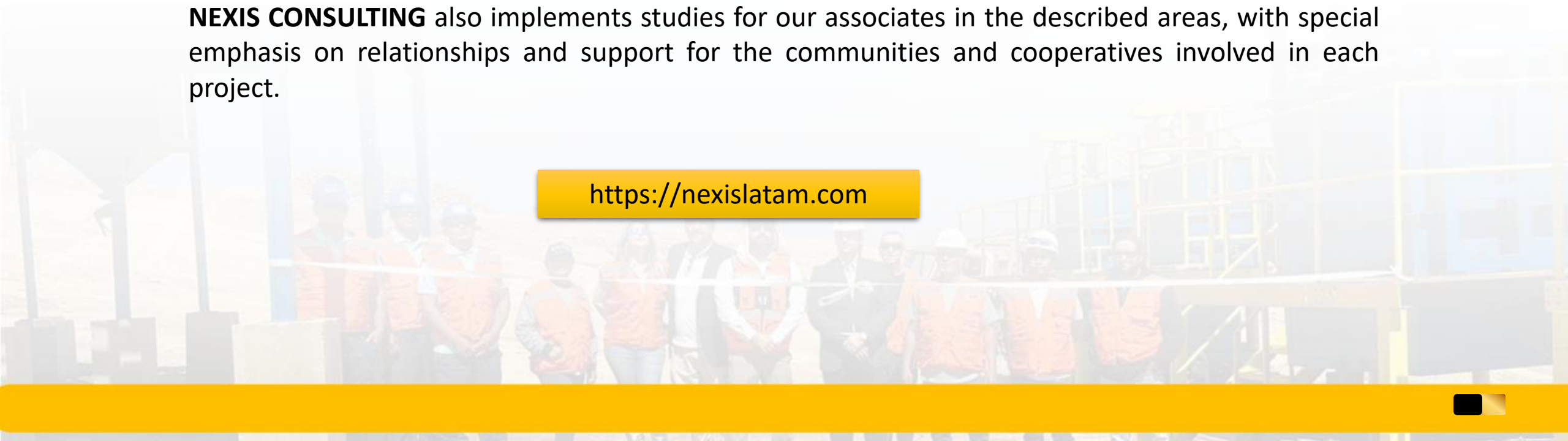
<https://lataminvestmentgroup.com/en/ciencia/nanotecnologia.html>

The logo for NEXIS CONSULTING, with 'NEXIS' in a large, bold, sans-serif font and 'CONSULTING' in a smaller, all-caps, sans-serif font below it.

NEXIS CONSULTING, is our systemic value management consulting company and is in charge of initiating studies in the macroeconomic-political-social and commercial fields in Chile and Latin America.

NEXIS CONSULTING also implements studies for our associates in the described areas, with special emphasis on relationships and support for the communities and cooperatives involved in each project.

<https://nexislatam.com>





GRUPO NEXIS, is a company focused on business development in Latin America that stands out for its ability to innovate, create and take advantage of new business opportunities in complementary sectors to mining, in order to diversify the objectives of **LIG** in sectors such as technology, renewable energy, real estate businesses, among others.

At a global level, it establishes connections for the development of various businesses focused on investment and the development of local economies, with a systemic vision that allows common growth and development, in an equitable and sustainable manner, encompassing the identification of new opportunities, the creation of needs and the formulation of alliance strategies.

<https://nexusgroup.cl>



American Lithium and Cobalt
CORPORATION

American Lithium and Cobalt Corporation, is a global company dedicated to the development of lithium and cobalt projects in the Latin American region. Our focus is the development of lithium and cobalt projects in Chile, Argentina, Bolivia and Peru. Our stakeholders are, on the one hand, lithium and cobalt miners.

That is, the people who own the lithium and cobalt mining property and do not have the strength and contacts to develop their own project. Today ALCC has three lithium brine projects, one in Chile “Maricunga”, a project in Argentina “hombre muerto” brine and a project in Bolivia Uyuni. We also have a cobalt project in the IV region of Chile and a lithium cathode LMO in Chile. Each project can be seen in the Projects presentation.

<https://alcc.cl>



Latam Advance
SMART EXPLORATION

Latam Advanced Smart Exploration (LASE), is a joint venture, a long-term strategic partnership between **Latam Investment Group (LIG)**, a company widely recognized in the development of small-scale mining projects with safe extraction of metals and non-metals based in more than 10 countries in Latin America; and **Advance Smart Exploration (ASE)**, and the collaboration with teams of scientists and high-level professionals, research centers, which have developed innovative technologies for the search and investigation of mineral deposits.

<https://laselat.com/>



S3M SMALL MINING MAINTENANCE AND MACHINERY, is our company specialized in the manufacture of machinery for plants and has been conceived to offer solutions to operating problems of the Holding or any small-scale project that requires it.

S3M Machinery's services also include the operation and maintenance of plants throughout Latin America and offers commercial facilities for our associates, in tune with the flows of each project.

<https://s3mlig.cl>



SMALL MINING CHEMICAL MATERIALS, is the company of our holding that develops innovative products based on waste and small mining by-products, at low cost, to satisfy our needs and those of our associates.

In addition to guaranteeing coverage and after-sales throughout Latin America, we also offer commercial facilities in tune with the flows of each project.

<https://smcm.cl/>





SMALL MINING CLEAN TECH, is the company of our group in charge of supporting and carrying out scientific research, which translates into the development of engineering services and technological innovations applicable to small-scale mining and clearly exportable, such as our horizontal reactor leaching plant for sulphides. and oxides through cavimetry, which will be the first plant in the world to leach metals with 0% environmental impact and with large-scale production capacity.

This development of technologies for small-scale mining includes a line of nanotechnology for metals and non-metals.

<https://smct.cl/>



SMALL MINING INFORMATIC SYSTEM, is the company in charge of providing software solutions for the holding's administration, management, production and operations, directing its efforts to support mining companies associated with Latam Investment Group.

Among its most relevant contributions are the ERP and CRM that LIG uses for project management in Latin America.

<https://smis.cl/>





**LATAM
INVESTMENT
GROUP**



NEXIS[®]
CONSULTING



**PORTAL INVERSIÓN
MINERA**



S3M
Small Mining
Maintenance and Machinery



**LME LATAM
MINERALS
EXPORT**



SMD
Small Mining Drilling



SMCM
Small Mining Chemical and Machinery



SMKM
Small Mining KPIs Monitoring



SMCT
Small Mining Clean Tech



**American Lithium and Cobalt
CORPORATION**



**CG
CLEAN GOLD**



**Nano
IndustrialTech**



**CLEAN
COPPER**



**NEXIS[®]
GROUP**



LIG LATAM
INVESTMENT
GROUP



Pioneers in 
Small Large Mining